

# Understanding the US-flagged fleet

What does the US-flagged fleet look like? The current make up of the fleet makes it a prime candidate for being a first mover in the decarbonisation of shipping.

### Types of vessels

**Oceangoing**

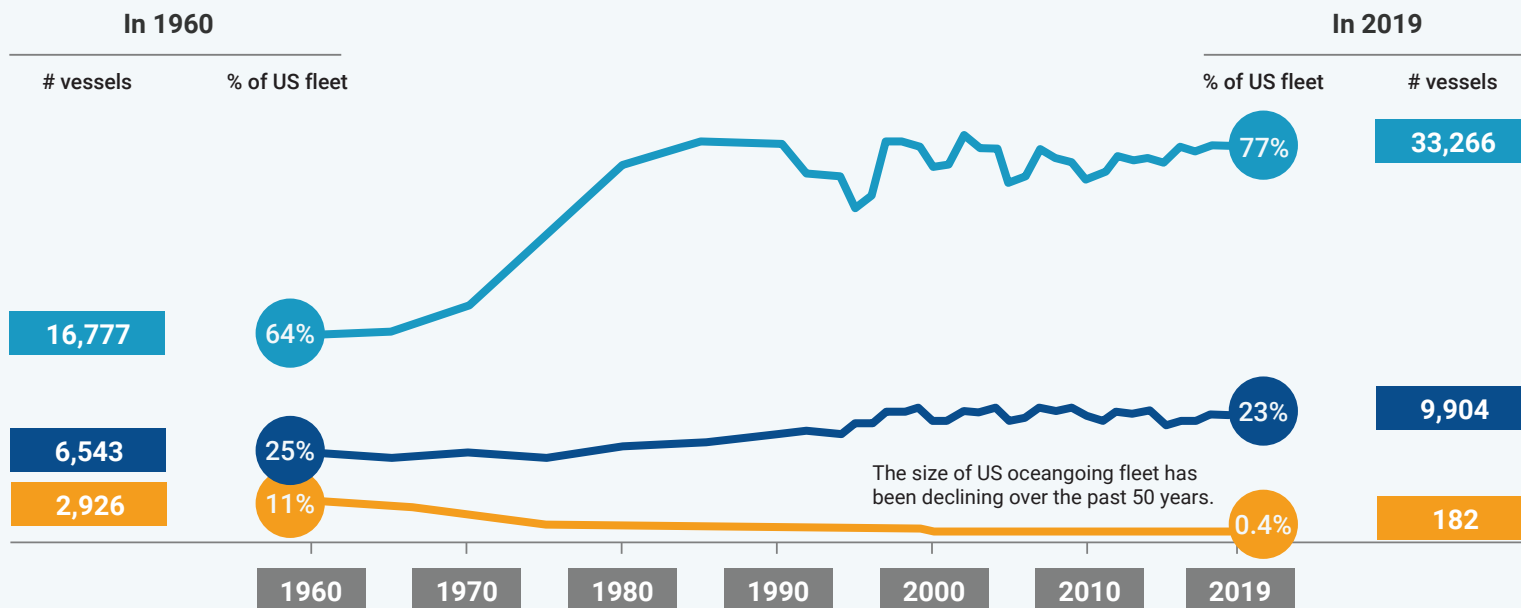
Vessels >1,000 GT that are able to operate in coastal and deep-sea shipping.

**Nonself-propelled**

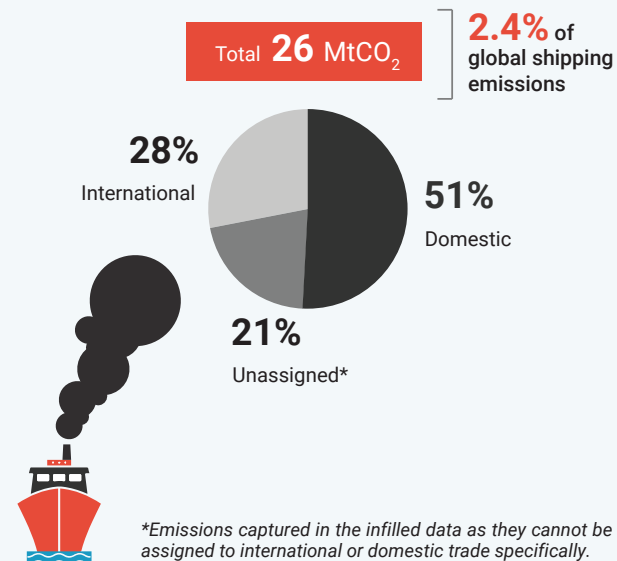
Craft that is not autonomously able to move, barges mostly used on inland waterways in combination with a tug.

**Self-propelled**

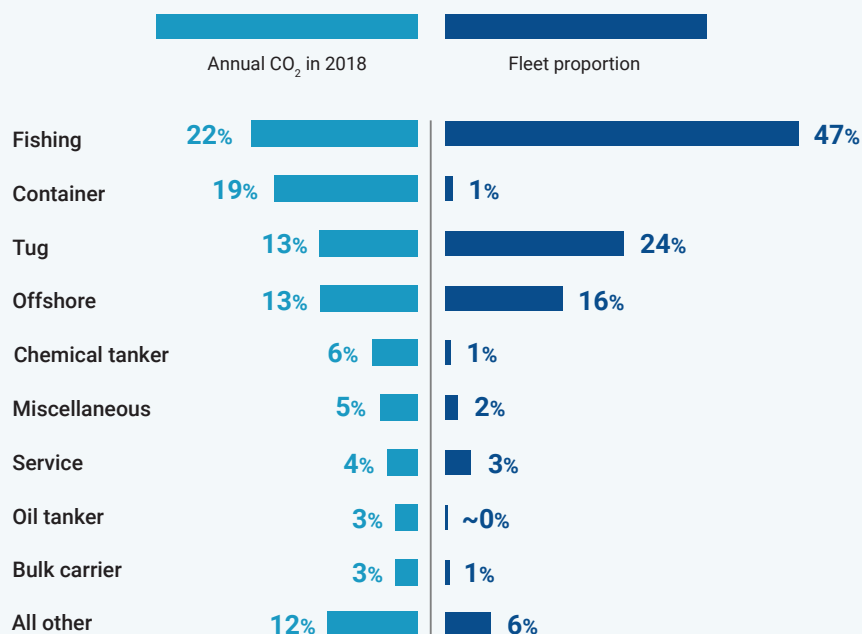
Vessels <1,000 GT with propulsion, mostly used coastally and on inland waterways.



## Emissions from US fleet transport



## Distribution of emissions and fleet proportion by ship type



## Median age of vessels

